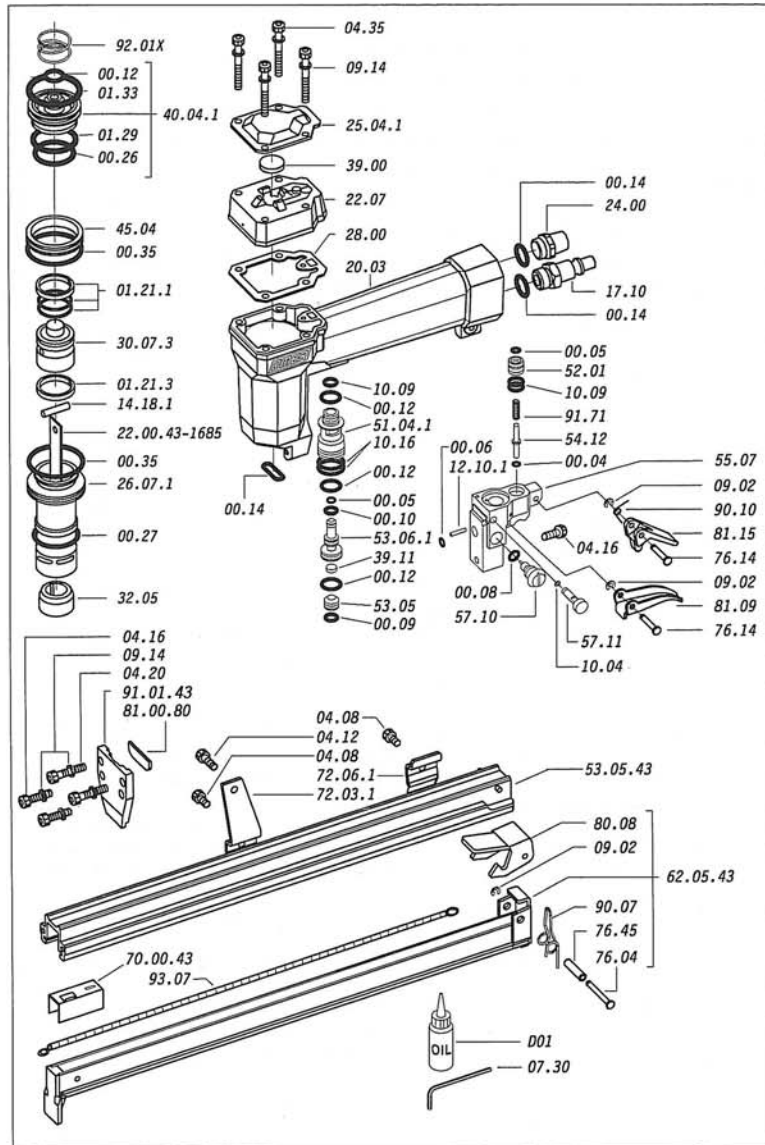
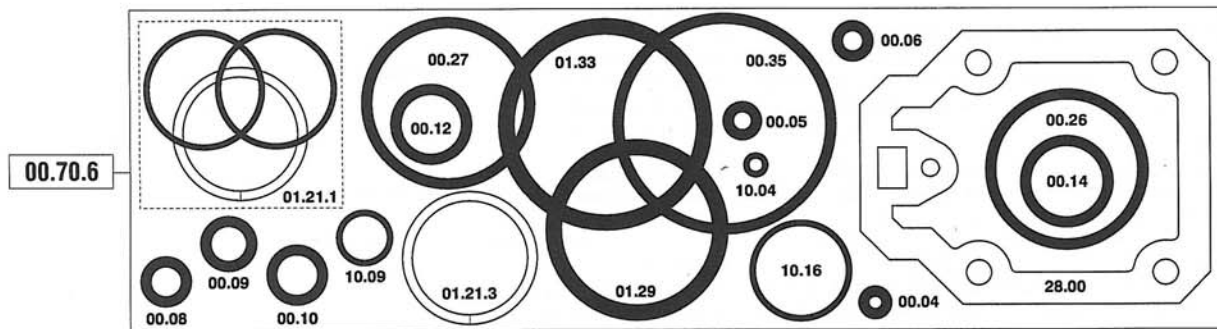


| PART NO. | DESCRIPTION |
|---------------|------------------------------|
| 00.04 | O-Ring |
| 00.05 | O-Ring |
| 00.06 | O-Ring |
| 00.08 | O-Ring |
| 00.09 | O-Ring |
| 00.10 | O-Ring |
| 00.12 | O-Ring |
| 00.14 | O-Ring |
| 00.26 | O-Ring |
| 00.27 | O-Ring |
| 00.35 | O-Ring |
| 01.21.1 | Gasket |
| 01.21.3 | Gasket |
| 01.29 | O-Ring |
| 01.33 | O-Ring |
| 04.08 | Screw |
| 04.12 | Screw |
| 04.16 | Screw |
| 04.20 | Screw |
| 04.35 | Screw |
| 07.30 | Hex. bar wrench |
| 09.02 | Elastic ring |
| 09.14 | Washer |
| 10.04 | O-Ring |
| 10.09 | O-Ring |
| 10.16 | O-Ring |
| 12.10.1 | Pin |
| 14.18.1 | Pin |
| 17.10 | Air plug 1/4" |
| 20.03 | Body (to specify the colour) |
| 22.07 | Head (to specify the colour) |
| 24.00 | Silencer |
| 25.04.1 | Exhaust deflector |
| 26.07.1 | Cylinder |
| 28.00 | Gasket |
| 30.07.3 | Piston |
| 32.05 | Bumper |
| 39.00 | Exhaust gasket |
| 39.11 | Valve gasket |
| 40.04.1 | Valve ass'y |
| 45.04 | Ring |
| 51.04.1 | Valve cylinder |
| 52.01 | Tiger valve bush |
| 53.05 | Piston |
| 53.06.1 | Valve piston |
| 54.12 | Trigger valve |
| 55.07 | Valve body |
| 57.10 | Regulator |
| 57.11 | Switch |
| 72.03.1 | Support |
| 72.06.1 | Slider-stop |
| 76.04 | Pin |
| 76.14 | Pin |
| 76.45 | Pin |
| 80.08 | Trigger |
| 81.09 | Trigger |
| 81.15 | Trigger |
| 90.07 | Spring |
| 90.10 | Spring |
| 91.71 | Spring |
| 92.01X | Spring |
| 93.07 | Spring |
| 22.00.43-1685 | Driver |
| 53.05.43 | Magazine |
| 62.05.43 | Slider |
| 70.00.43 | Pusher |
| 81.00.80 | Nose |
| 91.01.43 | Nose plate |
| D01 | Oiler |



O-RINGS



MODEL # CS71.16CLV